



Our Community Engagement Commitment

Warren Wilson College
2023–2024

Committing to Community Engagement

The Community Engagement Commitment is a **graduation requirement** for all Warren Wilson College students. You complete it by successfully progressing through our three Points of Engagement and Growth (PEGs).

GivePulse

GivePulse is Warren Wilson College's online platform to help you through the process:

- Find and sign up for new community engagement opportunities
- Record and reflect on your community engagement experiences (this is called entering an "Impact")
- Submit proposals for PEG 3 projects

As a new student, you will have a GivePulse account created for you within the first two weeks of the semester. Accessing GivePulse is easy:

- Go to **www.warren-wilson.givepulse.com**
- Sign in with your Warren Wilson email account and password

What Are the Requirements?

Learning About Points of
Engagement and Growth (PEGs)

EXPLORE

(PEG 1)

Students explore and reflect on their interests, values, skills, and self-awareness in a community context.





PEG 1 REQUIREMENTS:

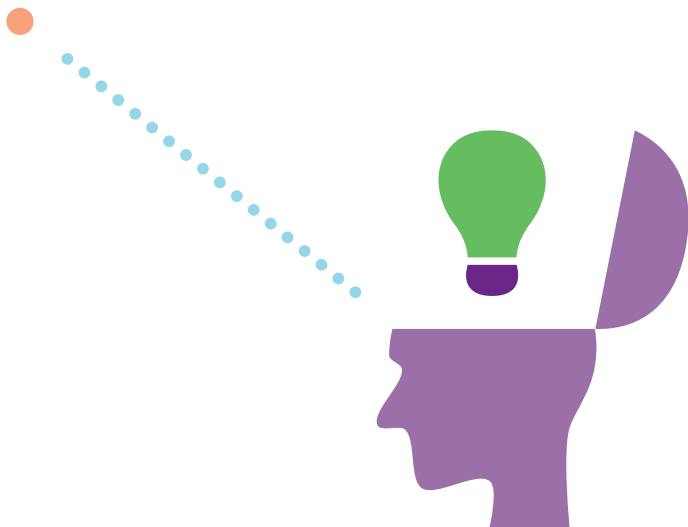
Incoming and current students:

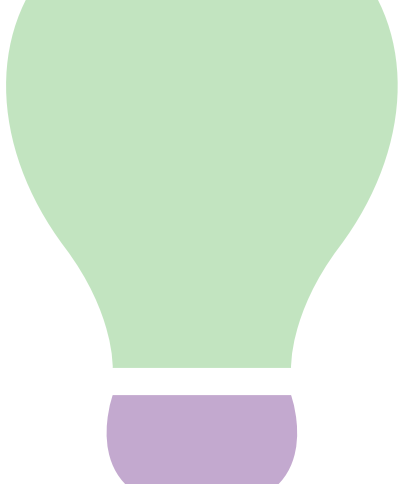
- Complete PEG 1 through your First Year Seminar course

UNDERSTAND

(PEG 2)

Students understand the complexity of a social or environmental issue through engagement and critical inquiry.





PEG 2 REQUIREMENTS:

By the end of your sophomore year,
complete at least one of the following options:

- Designated Community-Engaged PEG 2 Course
- Bonner-led PEG 2 opportunity, such as weekly trips to Shiloh Community Garden, Big Brothers / Big Sisters, 12 Baskets, etc.
- Designated community-engaged group experience, such as through your work crew or athletic team
- Participation in a Community-Engaged Fall or Spring Break Trip
- Independent project that includes 25 engagement hours in the same issue area

— Students who complete an Independent Project for their PEG 2 must submit their hours and reflection on GivePulse

IMPACT

(PEG 3)

Students complete a signature community engagement experience by working toward a community goal in collaboration with a community partner.





PEG 3 REQUIREMENTS:

By the end of your junior year, you must complete the following criteria:

- Submit a PEG 3 Proposal to the Community Engagement Office for approval
- Collaborate with an off-campus community partner to meet one or more of their goals and address a specific social and/or environmental issue
- Engage in one of the following ways for a minimum of 50 hours:

- **Community-Engaged Academic Senior Capstone Project**

— Students who plan to complete PEG 3 through their Senior Capstone Project should submit a PEG 3 proposal by the end of their junior year

- Community-Engaged Internship
 - Independent Community Project
 - Leadership of an Understand (PEG 2) opportunity (i.e., designated work crew or break trip)
 - Designated Community-Engaged PEG 3 Course
- Submit final hours and reflection as an Impact on GivePulse

Dual Enrollment Students

- **0–23 credits:** No exceptions made. Complete all expectations of First Year students
- **24–59 credits:** Exempt from Explore (PEG 1)
- **60+ credits:** Exempt from Explore (PEG 1) and Understand (PEG 2)

FAQs

COVID-19 Restrictions

What types of community engagement and service are recommended for Fall 2023?

Almost all of our partner sites have expressed interest in engaging with volunteers in-person, as long as students are vaccinated (with the exception of students with medical or religious exemptions) and follow masking protocols. Our partners have agreed to follow the same precautions, and we will work collaboratively to ensure the safety of all participants.

General Questions

How do I get PEG credit for independent community engagement projects I have completed?

Submit your hours as an Impact on GivePulse and answer the reflection questions related to the PEG you wish to complete. Community Engagement staff will follow up with you to confirm PEG completion.

I am very active in community organizing around current social movements (vaccine mobilization, movements for Black lives or climate action, etc.). Can that work count toward my community engagement requirement?

The Community Engagement Commitment celebrates any and all forms of engagement and thus is not limited to work with 501(c)3 nonprofits and/or government organizations. For any off-campus social justice work, please enter your hours as an Impact on GivePulse.

How do I find opportunities for engaging in the community?

GivePulse is your resource for finding and signing up for community engagement opportunities. Log in to the Warren Wilson GivePulse page using your Warren Wilson email credentials.

How do I find out about designated community-engaged PEG 2 and PEG 3 courses?

A list of designated courses can be found on the Community Engagement page on myWWC and is updated prior to registration each semester. Here is the pathway to get you there: [myWWC > Experiential Learning > Select “Community Engagement” on the left menu.](#)

What if I want to do something that isn't on GivePulse?

That's great! We encourage you to find opportunities you're excited about.

PEG 2

- If you're not sure that the opportunity will fulfill PEG 2, contact the Community Engagement Office and we can help.
- For any independent PEG 2 experiences, you'll be responsible for recording your experience as an Impact on GivePulse. Your community partner will also be asked to verify your submission.

PEG 3

- Submit a PEG 3 Proposal form for approval *BEFORE* you start your engagement work. Community Engagement staff will be in touch to let you know if your proposal has been approved.
- Once you complete your PEG 3, you'll be responsible for recording your experience as an Impact on GivePulse and answering the mandatory reflection questions that are part of that form. Your community partner will also be asked to verify your submission.

Where can I view my student community engagement record?

All of your community engagement experiences (or “impacts”) are logged through GivePulse. The Community Engagement Office will log some of these for you, such as work done through community-engaged courses or opportunities led by our Bonner Crew. We encourage you to log your own impacts for any community engagement you do independently!

How do I know which PEGs I have completed?

You can find this on your unofficial transcript in myWWC. Here is the pathway to get you there: [myWWC > Academics > Grades & Transcript > My Unofficial Transcript > Select “Community Engagement” from the Division drop-down > View Unofficial Transcript](#)

PEG 3 Questions

How do I get started on my PEG 3?

Talk to faculty and staff, community partners, and students to brainstorm the different ways you can complete your signature community engagement experience. Once you have a plan in place, you must submit a PEG 3 Proposal form for approval. PEG 3 Proposal Forms are linked on the Community Engagement page on myWWC.

What counts as working to complete a community goal?

This depends on the community partner. Ultimately, your collaboration with them must support them in meeting one or more goals that they have

identified. Sometimes this is a more intensive capacity building project, or maybe it's prolonged engagement work. If you're unsure, please reach out to the Community Engagement Office!

Can I get paid?

Yes. Paid opportunities do not preclude them from being PEG 3 opportunities.

Are there any hour requirements? How much time do I have to commit?

PEG 3 community engagement experiences are a minimum of 50 hours with the same community partner.

What is an independent PEG 3 project?

An independent project is one that doesn't meet the guidelines of an academic Capstone, community-engaged internship, or campus leadership experience.

Where do I find out about community-engaged internships?

GivePulse has some community-engaged internships listed. You can also meet with Hannah Richardson, Director of Career Engagement, to discuss possibilities. All internships that are 80+ hours must be approved by the Director of Career Engagement.

What are the parameters of a community-engaged internship vs. a standard internship? Can they be the same? What is the approval process?

The Director of Career Engagement must approve all internships, but you must also submit a PEG 3 Proposal to have a community-engaged internship approved for PEG 3 completion.

What are examples of Campus Leadership for Community Engagement?

- Facilitating a PEG 2 opportunity for your work crew
 - Providing leadership for your athletic team's PEG 2 Experience
 - Leading a community-engaged Fall or Spring Break Trip

How do I record my PEG 3 experience?

- Record your hours as an Impact on GivePulse and answer the required PEG 3 Reflection questions included on that form.
- Your PEG 3 Impact form will also prompt you to provide your community partner's email address so that your Impact can be verified. When you submit your Impact, they will automatically receive a verification request from GivePulse. Your PEG 3 will not be considered complete until your community partner verifies the information you provide.



Warren Wilson
COLLEGE